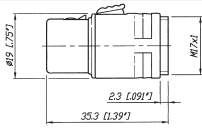


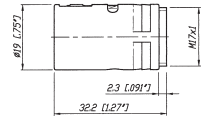
Module Selection Guide

Connector module

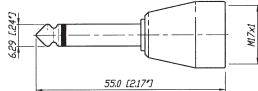
NM3FXI
XLR female
M17x1 outside



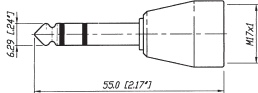
NM3MXI
XLR male
M17x1 outside



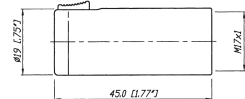
NM2P
mono 1/4" plug
M17x1 inside



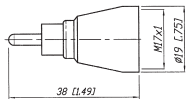
NM3P
stereo 1/4" plug
M17x1 inside



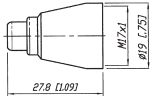
NM3J
stereo 1/4" jack
M17x1 inside



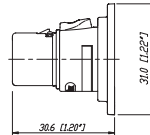
NMPMM
RCA male
M17x1 inside



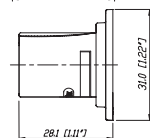
NMPMF
RCA female
M17x1 inside



NM3FD-B
black plated
D-Shape



NM3MD-B
black plated
D-Shape

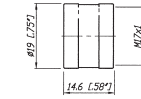


Coupler / housing

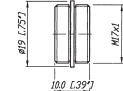
KM
M 17x1 inside



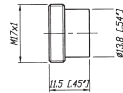
KMX
M 17x1 inside



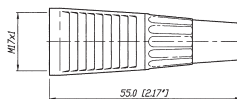
VM
M 17x1 outside



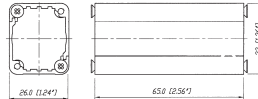
VMX
M 17x1 outside



CM
cable outlet
M 17x1 inside

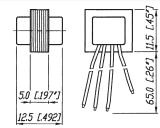


NA-Housing¹⁾
black plated
screws included

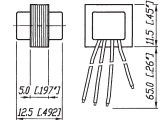


Transformer / switch

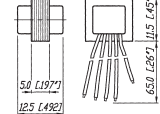
NTE1
1:1



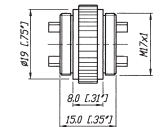
NTE4
1:4



NTE10/3
1:3:10

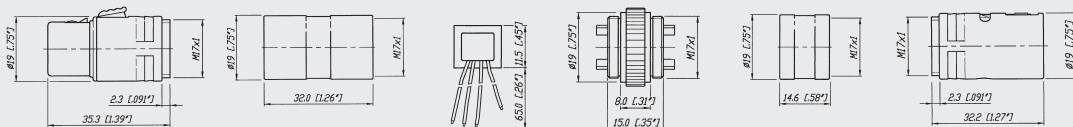


SM2/2
2x2 switch
M17x1 outside



1) ... Combinations possible with all D Shape connectors like e.g. NC3FD-L-1, NF2D, NBB75DSI, etc.

Example:



NM3FXI

KM

NTE1

SM2/2

KMX

NM3MXI

