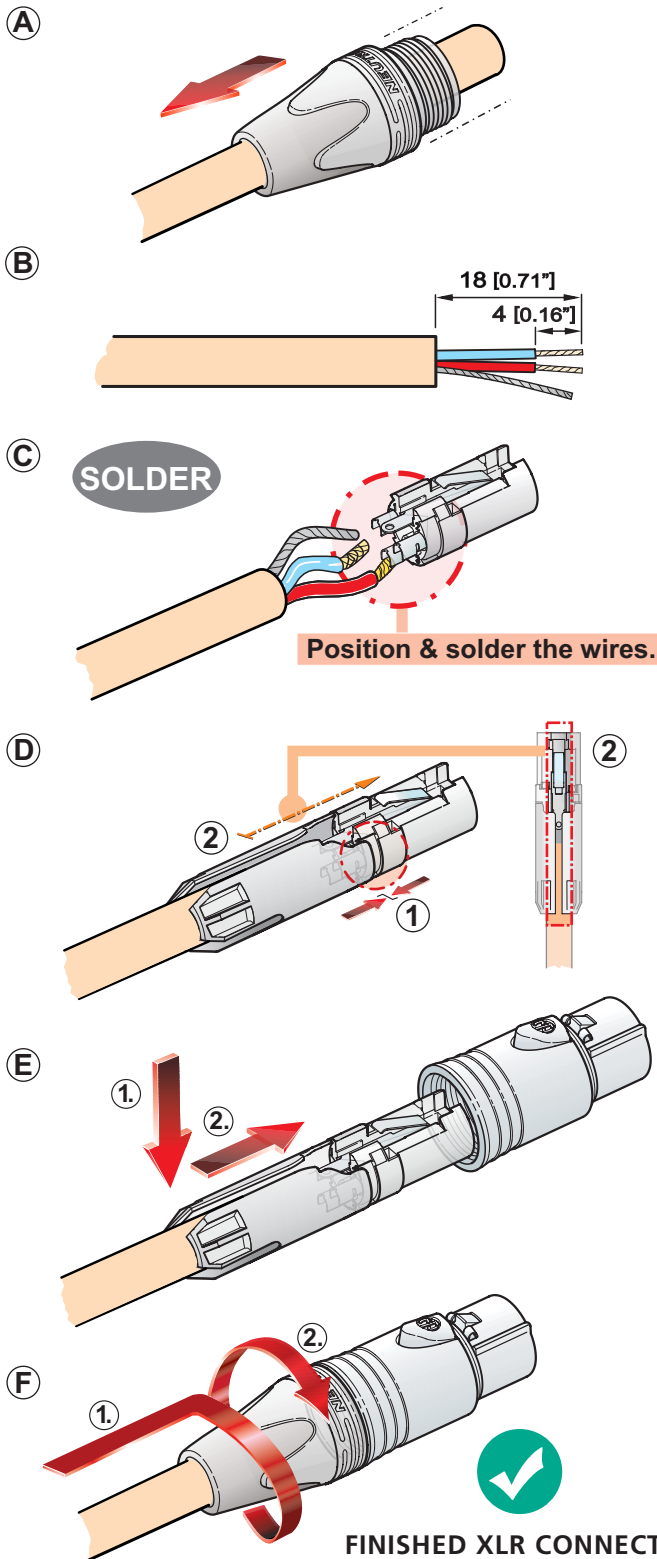




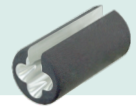
ASSEMBLY INSTRUCTION

NC*FXX-14 & NC*MXX-14 | XLR Cable Connector



- A** Slide the boot onto the cable.
- B** Prepare cable as shown.
- C** Insert wires into the terminals and solder them.
- D** Put chuck onto the cable.
Attention:
(1) Pay attention to the guiding key.
(2) Align the slot of the chuck to the spring.
- E** Slide insert and chuck together into the housing.
- F** Finish the installation by turning the bushing onto the connector.

OPTION:
Use the handtool HTXX-14
to tighten the bushing.



✓ ORDER OF ASSEMBLY

BUSHING	CHUCK	INSERT	HOUSING
NC*FXX			
NC*MXX			

Find more details of XLR Connectors on www.neutrik.com.



Draft. Nr.: BDA 198 V2
Update: 2023-03-15

Neutrik AG | LI-9494 Schaan
www.neutrik.com

Data subject to change without prior notice. © 2023 NEUTRIK®. NEUTRIK® are registered trademark of Neutrik AG. ALL RIGHTS RESERVED.

NEUTRIK
A brand of the Neutrik Group