



CLEANING INSTRUCTION

opticalCON® Chassis Connector Cleaning Adapter FOCD-STC & FOID-STQC





CAUTION:
Laser radiation, do not look directly into beam of light!

The sealing shutter mechanism of the opticalCON® avoids contamination of the LC ferrule locked inside. The dust-proof design reduces maintenance intervals to a minimum; if nevertheless necessary, follows the maintenance procedure below to avoid damages on the due to inproper cleaning.

Chassis Cleaning / Inspection

Intervall:	every 500 matings recommended
Tools:	Neutrik® Chassis Cleaning Adapter: FOCD-STC / FOID-STQC Dry Cleaner: FOCD-DC125, FOCD-DCM Optical fiber video probe

1. opticalCON® DUO Chassis Cleaning

- (A)** 
Video probe tip
- (A)** Insert the FOCD-STC in to the Neutrik opticalCON® NO2-4FDW-A-* chassis.
Use the appropriate tip for the video probe according to the matrix on the last page.
Then inspect the LC surface.
- (B)** 
Dry Cleaner
- (B)** After inspection clean the LC surface with the Dry Cleaner 1.25 mm.
Check the condition of the LC ferrule surface again and if necessary, repeat step **(A)** and **(B)**.



2. opticalCON® QUAD Chassis Cleaning

Ⓒ



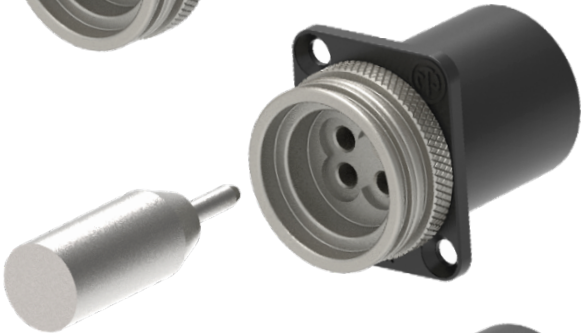
Ⓒ Insert the Inspection Adapter into the FOCD-STC.

Ⓓ



Ⓓ Insert the unit into the Neutrik opticalCON® chassis NO4-FDW-A

Ⓔ



Ⓔ Use the appropriate tip for the video probe according to the matrix on the last page.

Then inspect the LC surface.

Ⓕ



Ⓕ After inspection remove the inspection adapter and clean the LC surface with the Dry Cleaner 1.25 mm

Check the condition of the LC ferrule surface again and if necessary, repeat step C and D.

3. opticalCON® MTP® Chassis Cleaning

Ⓖ



Ⓖ Insert the FOCD-STC in to the Neutrik opticalCON® NO12FDW-A or NO24FDW-A chassis.

Use the appropriate tip for the video probe according to the matrix on the last page.

Attention:

Due to the 8-degree angled MTP® singlemode ferrule. It is not possible to inspect singlemode MTP® ferrules.

Currently only MTP® Multimode ferrules can be inspected.






H After inspection clean the MTP® surface with the Dry Cleaner MPO / MTP®.



Check the condition of the MTP® surface again and if necessary, repeat step G and H.

CLEANING MATRIX

Service Tool	Chassis	Video Probe	Appropriate Tip	Brand	Dry Cleaning Tool	
FOCD-STC 	NO2-4FDW-A NO2-4FDW-1-A	DI-1000-B2-NT DI-1000-WIFI DI-2000-B2-* CI-1100-A2	PT2-LC/PC/F-1	LIGHTEL	FOCD-DC125	
		FBP-5000 FBPP5000i FIT-FC-KIT1	FBPT-LC	VIAVI/JDSU		
FOID-STQC 	NO4FDW-A	DI-1000-B2-NT DI-1000-WIFI DI-2000-B2-* CI-1100-A2	PT2-WO/ADAPT-3/N	LIGHTEL		
		FBP-5000 FBPP5000i FIT-FC-KIT1	FBPP-BAP3	VIAVI/JDSU		
FOCD-STC 	NO12FDW-A NO24FDW-A	DI-1000-B2-NT DI-1000-WIFI DI-2000-B2-* CI-1100-A2	PT2-MTP/PC/OCON-XY-EXT only MULTIMODE	LIGHTEL		FOCD-DCM
		FBP-5000 FBPP5000i FIT-FC-KIT1	FBPT-MTP-L only MULTIMODE	VIAVI/JDSU		

More Information on the www.neutrik.com

<https://www.neutrik.com/en/products/video/opticalcon>



Neutrik AG	LI	T: +423 / 237 24 24	F: +423/232 53 93	Neutrik France	FR	T: +33 1/4131 6750	F: +33 1/4131 0511
Neutrik Americas Inc.	USA	T: +1 704 / 972 3050	F: +1 704/438 9202	Neutrik Tokyo Ltd.	JP	T: +81 3/3663 4733	F: +81 3/3663 4796
Neutrik (UK) Ltd.	UK	T: +44 1983 / 811 441	F: +44 1983/811 439	Neutrik Hong Kong Ltd.	HK	T: +852/2687 6055	F: +852/2687 6052
Neutrik Vertriebs GmbH	DE/NL/AT/DK	T: +49 8131 / 280 890	F: +49 8131/280 830				

Draft. Nr.: BDA 636 V2 | Update: 2022-04-21 | Data subject to change without prior notice. © 2022 NEUTRIK®, NEUTRIK® and opticalCON® are registered trademark of Neutrik AG. ALL RIGHTS RESERVED.