



Instruction

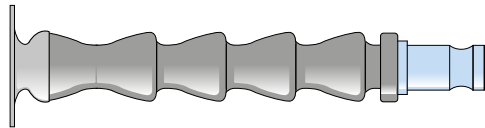
XIRIUM PRO | Mounting Arm NXPMA

A

Parts included



- Adapter module for TX antenna

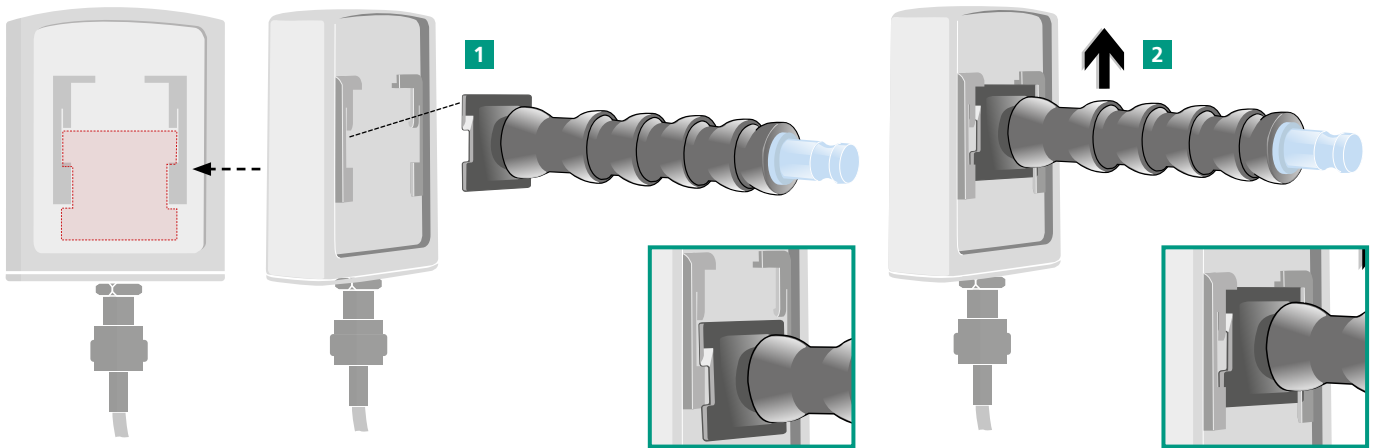


- Mounting arm including bolt

B

Fastening the directional antenna NXPA-14-40-35

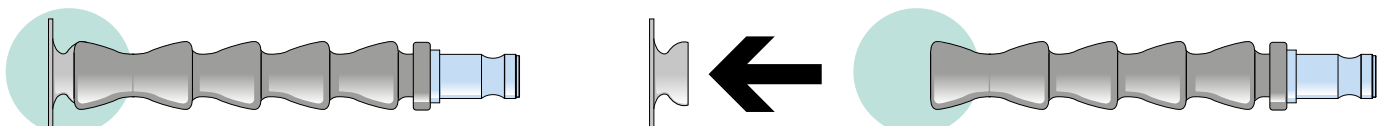
- 1 Guide the mounting arm into the slot on the rear of the antenna as pictured below.
- 2 Slide the mounting arm upwards, towards the top of the antenna until it snaps in-place.



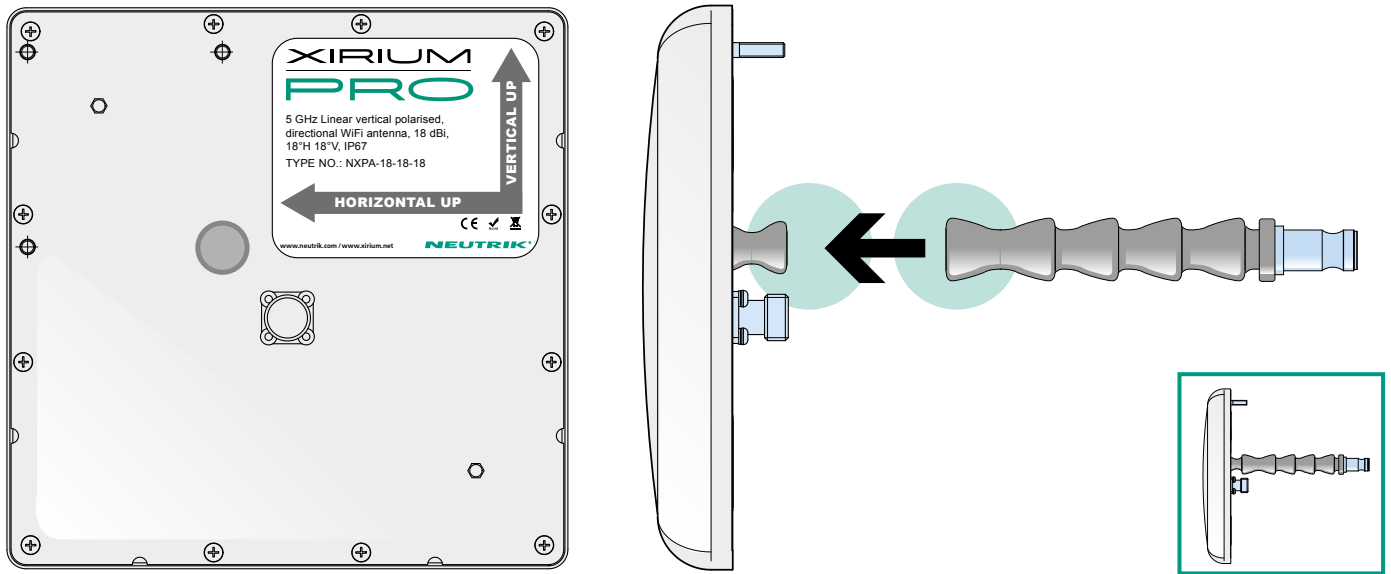
C

Fastening the directional antenna NXPA-18-18-18

- 1 Remove the mounting clip on the front of the mounting arm.

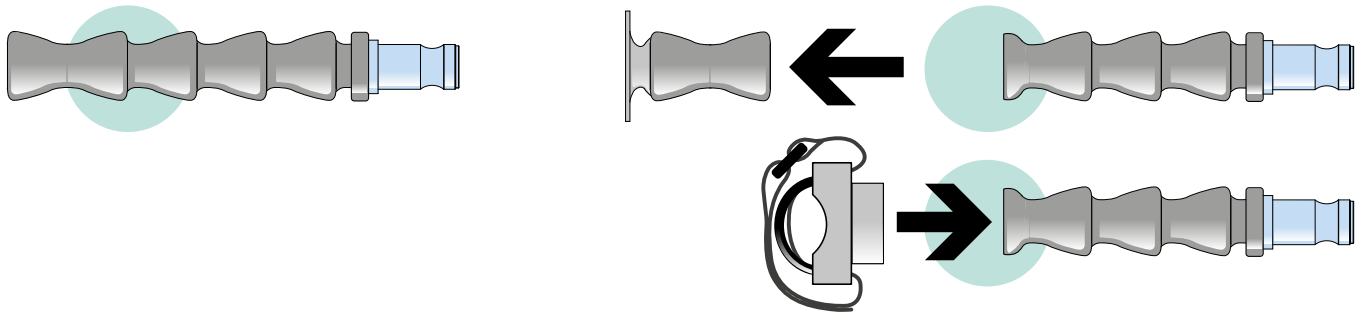


2 Press the mounting arm over the fixture on the rear-side of the antenna.

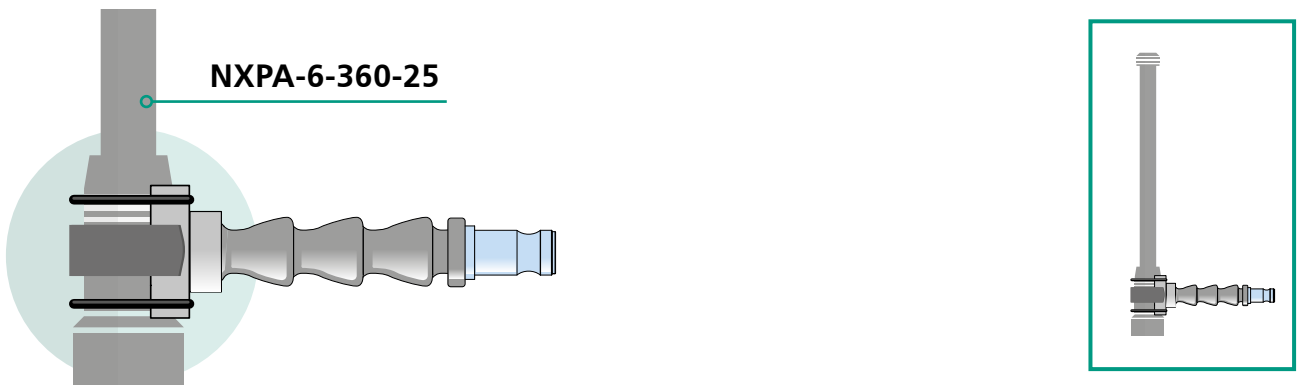


D Fastening the omnidirectional antenna NXPA-6-360-25

1 Remove the first two sections from the front of the mounting arm.



2 Press the provided adapter module onto the mounting arm and attach it to the antenna with the fastener.



Document No: BDA 516
Version: 2017/02

Neutrik® AG
9494 Schaan
Liechtenstein

T +423 2372424
E neutrik@neutrik.com

Data subject to change without prior notice. © 2017 NEUTRIK®. NEUTRIK®, XIRIUM® are registered trademarks of NEUTRIK AG. ALL RIGHTS RESERVED.