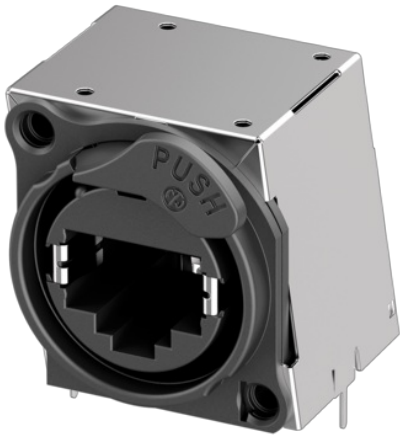


## NE8FAH-S-AE



Fully shielded, horizontal PCB mount RJ45 receptacle, B-series cutout with latch lock, max. panel thickness 3 mm. The "Shielded etherCON" offers a closed metal housing to avoid EMI or cross talking.

The etherCON Series is a ruggedized and lockable RJ45 connector system, optimized for pro audio, video and lightning network applications. The chassis connectors are shaped to fit into standardized panels out of the entertainment industry.

The all plastic A-Series offers the most space saving and cost effective design.

Attention! Does not intermate with CAT6 cable connector NE8MC6-MO and NKE6S\* cables.



## Features & Benefits

- Accommodates rugged etherCON NE8MX\* or any standard RJ45 plug
- Comprehensive shielding granted by completely closed metal housing
- Connector is fixed onto PCB due to soldered connector housing
- Complies with Class D according to TIA / EIA 568B and ISO / IEC 11801 standard
- Approved latch lock system
- Improves EMC performance of appliance even in unmated condition
- Ground panel connection
- Compound material of push tab improves ESD protection

## Technical Information

| Product         |             |
|-----------------|-------------|
| Title           | NE8FAH-S-AE |
| Type            | Chassis     |
| Connection Type | etherCON    |
| Gender          | Female      |

| Electrical                |   |
|---------------------------|---|
| Contact resistance        | < 50 mΩ   |
| Dielectric strength       | 1 kV DC   |
| Frequency range           | 1 – 100 MHz   |
| Insulation resistance     | > 0.5 GΩ  |
| Rated current per contact | 1.5 A   |
| Rated voltage             | < 50 V  |
| Transmission performance  | CAT5e acc. to TIA/EIA 568C component specifications<br>CLASS D acc. to ISO/IEC 11801 channel specifications |
| Standard compliance       | PoE type 4 class 8 (100W) acc. IEEE 802.3bt   |

| Mechanical       |                      |
|------------------|----------------------|
| Insertion force  | ≤ 20 N               |
| Withdrawal force | ≤ 20 N               |
| Lifetime         | > 1000 mating cycles |
| Panel thickness  | Max. 3 mm (0.12")    |
| Wiring           | Horizontal PCB mount |
| Locking device   | Rear mounting        |
| Chassis shape    | A                    |
| Mounting         | A-Screw              |

| Material        |                           |
|-----------------|---------------------------|
| Contact plating | 0.2 µm Au over Ni plating |
| Contacts        | Bronze (CuSn8)            |
| Locking element | HPPA                      |
| Shell           | PBT D202G30               |

| Environmental     |                           |
|-------------------|---------------------------|
| Flammability      | UL 94 V-0                 |
| Temperature range | -30 °C to +80 °C          |
| Solderability     | Complies with IEC 68-2-20 |